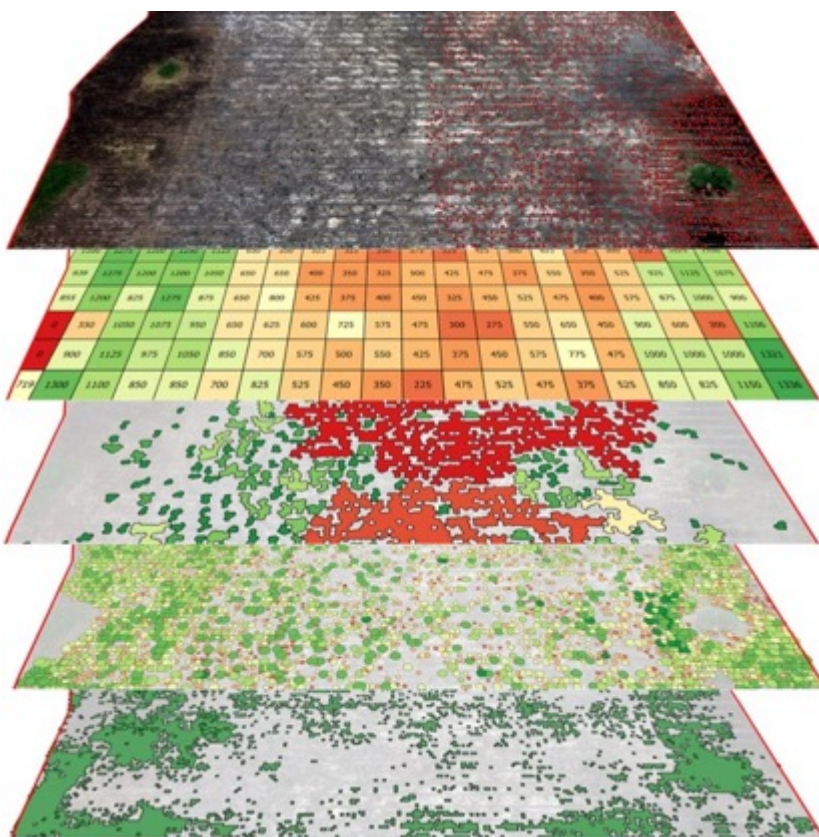


SEEDLING SURVIVAL MAPS



This first page is meant to show you the high precision maps and results that can be obtained with SKYLAB precision forestry tools.

SKYLAB's Seedling Counter delivers high precision maps showing seedling density, failures, vitality and weeds across the whole stand in ¼ha grid cells. 100% comprehensive density measurements with zero terrestrial sampling.



High resolution **ORTHOPHOTO** gives good overview of your stand.

The seedling **DENSITY** map shows the exact density for each 20x20m grid cell across the entire stand.

The **GAP** map highlights areas of seedling failures and gives exact numbers of missing seedlings.

The **VIGOUR** map estimates the relative crown size and vitality of each seedling.

The **WEED** map shows the presence and intensity of weed for the entire stand.



Questions? Need help?

Contact Albrecht von Ruffer
ruffer@skylabglobal.com
 +49 177 65 15 964



SKYLAB GmbH, Germany
www.skylabglobal.com
 +49 40 788 77 092

Report Summary

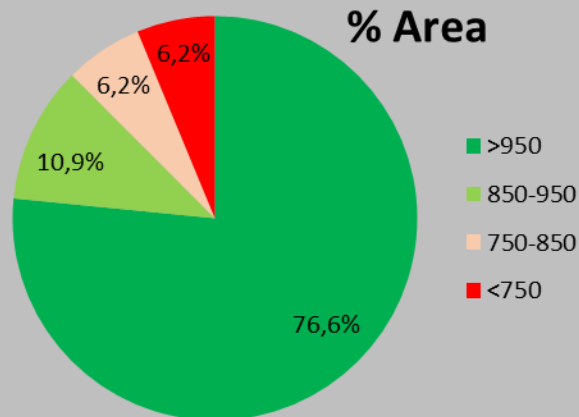
Site [Name], Australia
 Analysis Seedling Counter
 Species *Pinus radiata*
 Age 10 months
 Area 22.49 ha

Stocking level 100.3%

Target density 1200/ha

Actual density 1203/ha

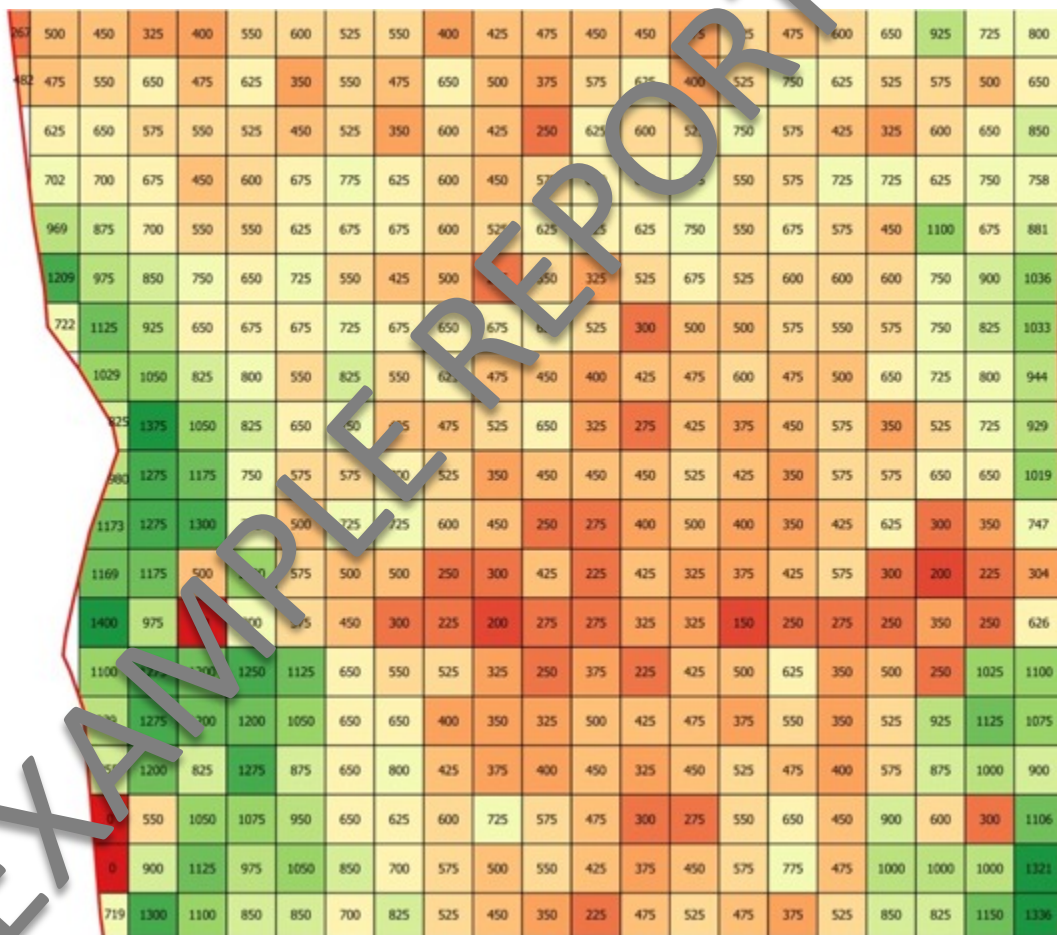
Log on to www.skylabmaps.com
 to access your maps


**DENSITY
MAP**
Legend

Sum Volume / grid [m³]

- 50.0 - 55.0
- 55.0 - 60.0
- 60.0 - 65.0
- 65.0 - 70.0
- 70.0 - 75.0
- 75.0 - 80.0
- 80.0 - 85.0
- 85.0 - 90.0
- 90.0 - 95.0
- 95.0 - 100.0
- 100.0 - 105.0
- 105.0 - 110.0
- 110.0 - 115.0
- 115.0 - 120.0
- 120.0 - 121.1

AOI



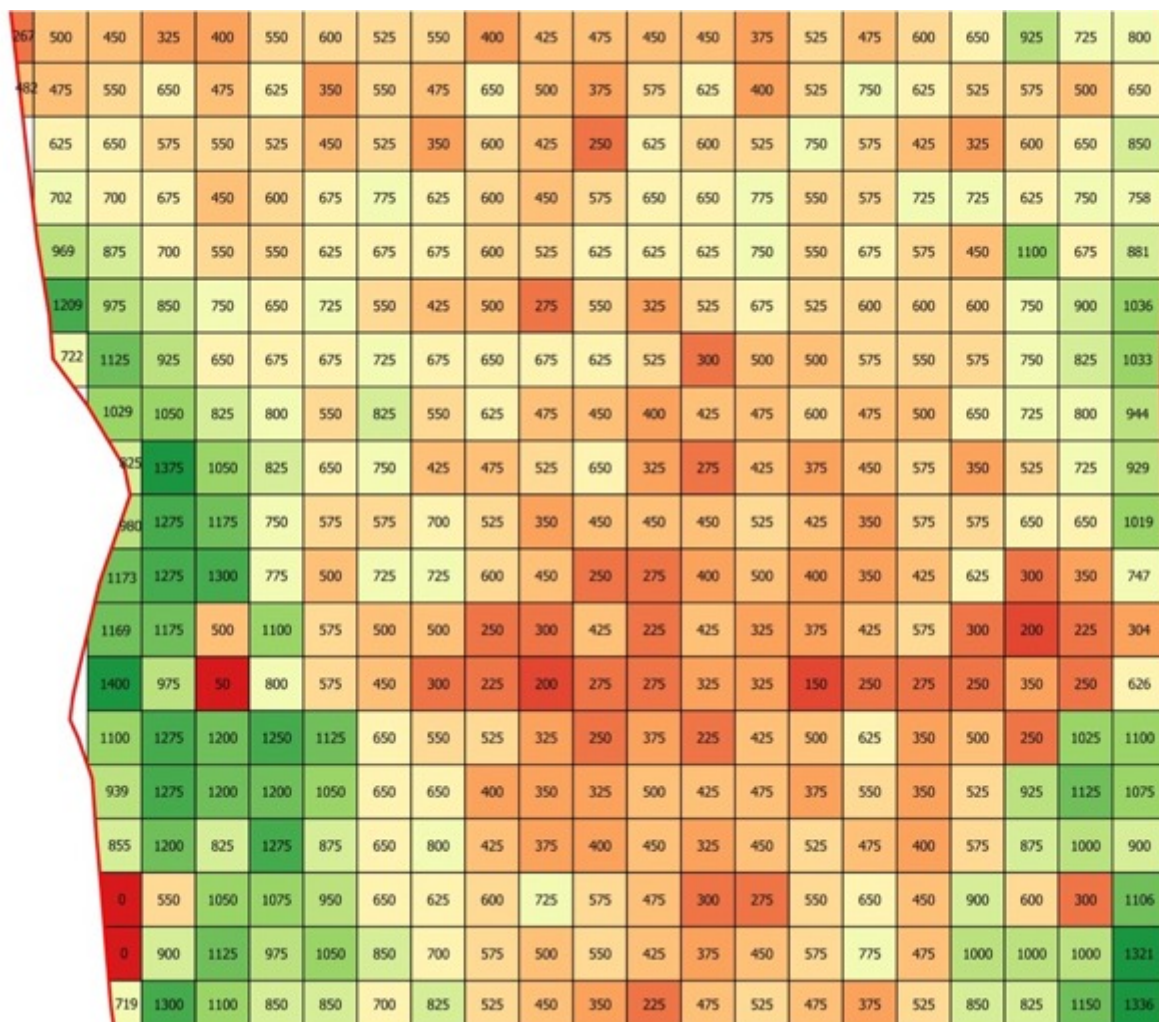
ORTHOPHOTO

Giving a good overview of variations in seedlings, weed, soil properties and harvesting residues across the whole stand.



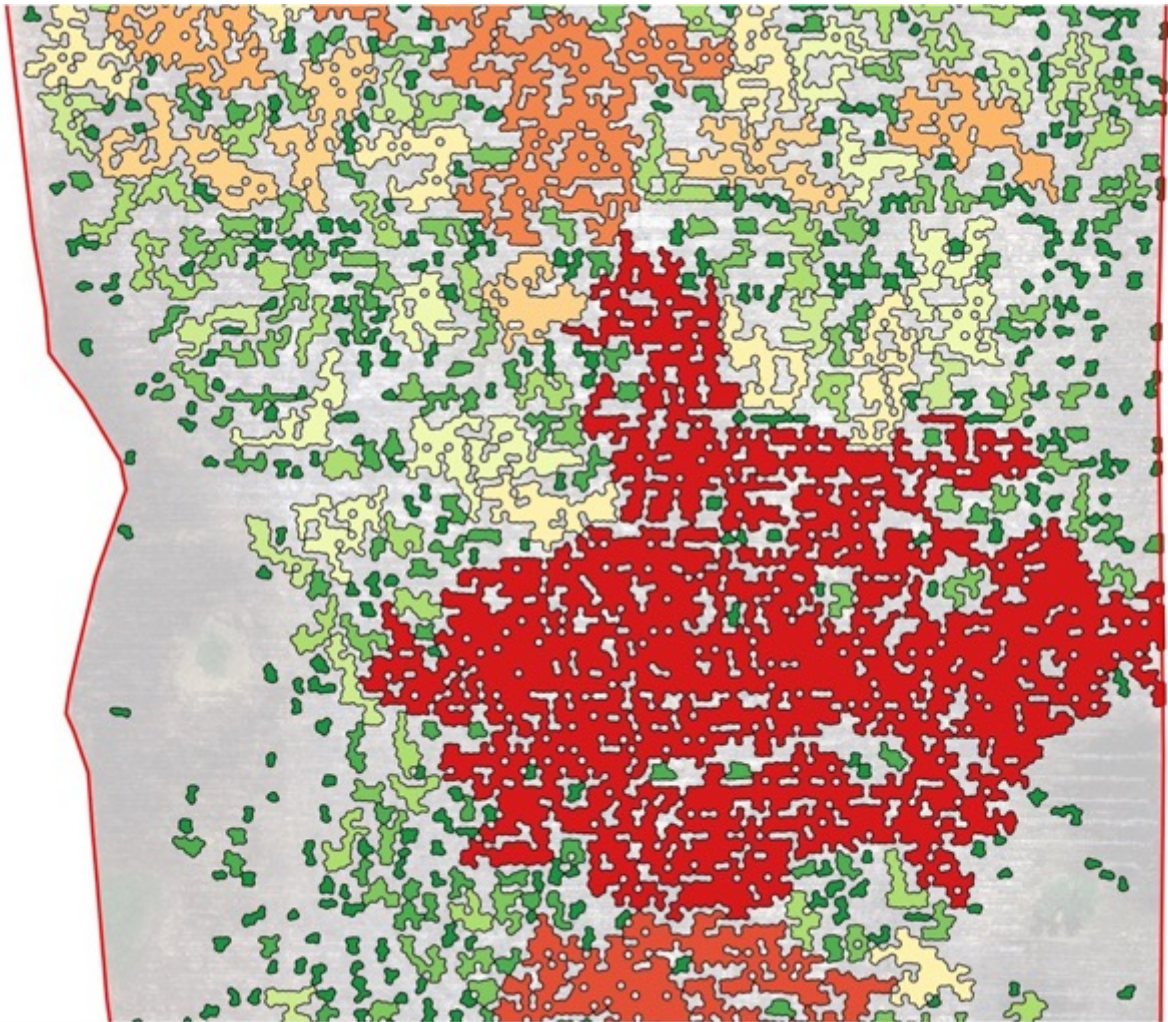
DENSITY MAP

Providing the density of seedlings present in each of the ¼ha grid cells across the whole stand, making areas of significant failure or low densities easily visible.



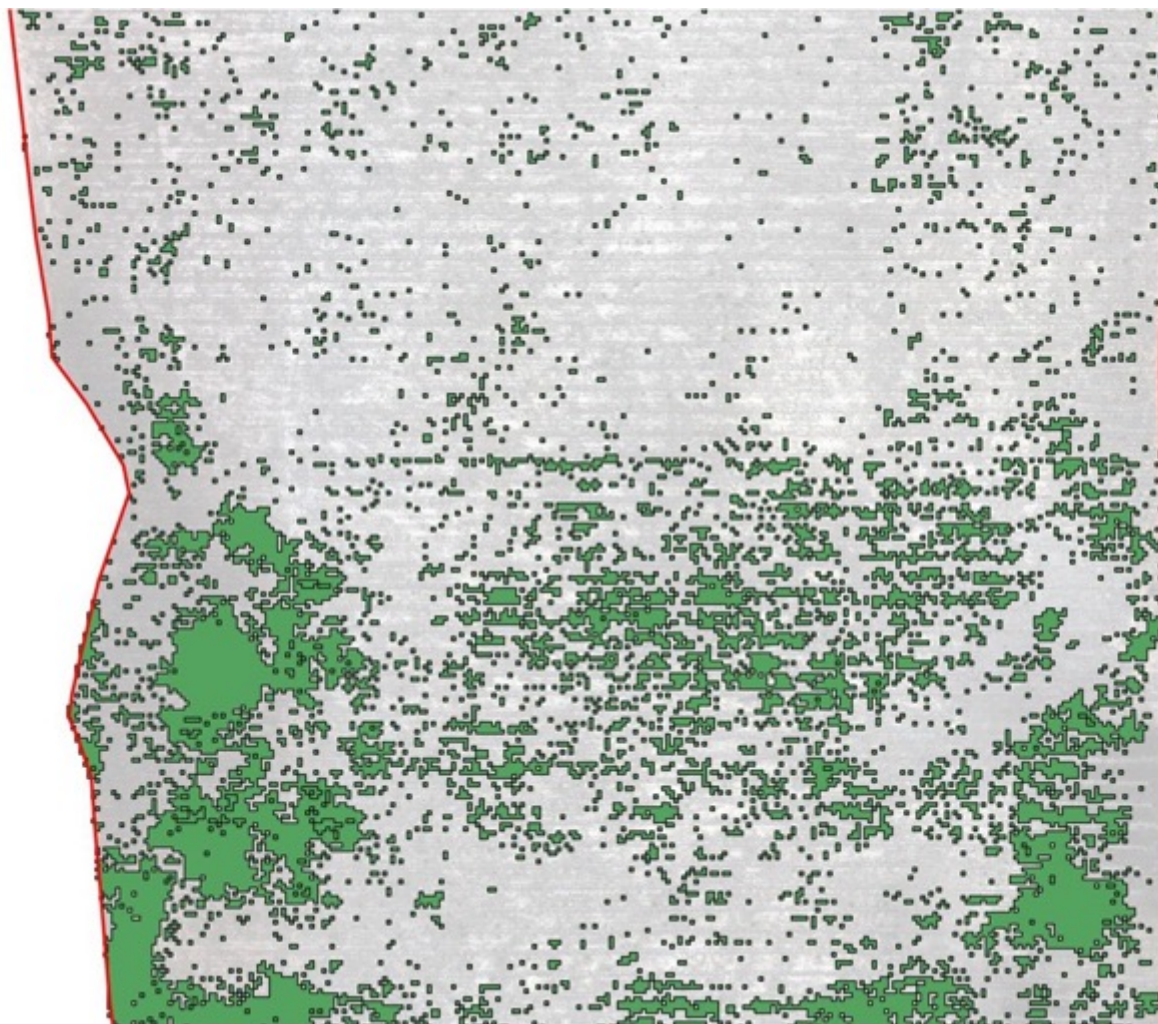
GAP MAP

The gap map is an additional help to quantify the failures by counting the number of seedlings in a neighbourhood and then classifying the absolute failure numbers into categories.



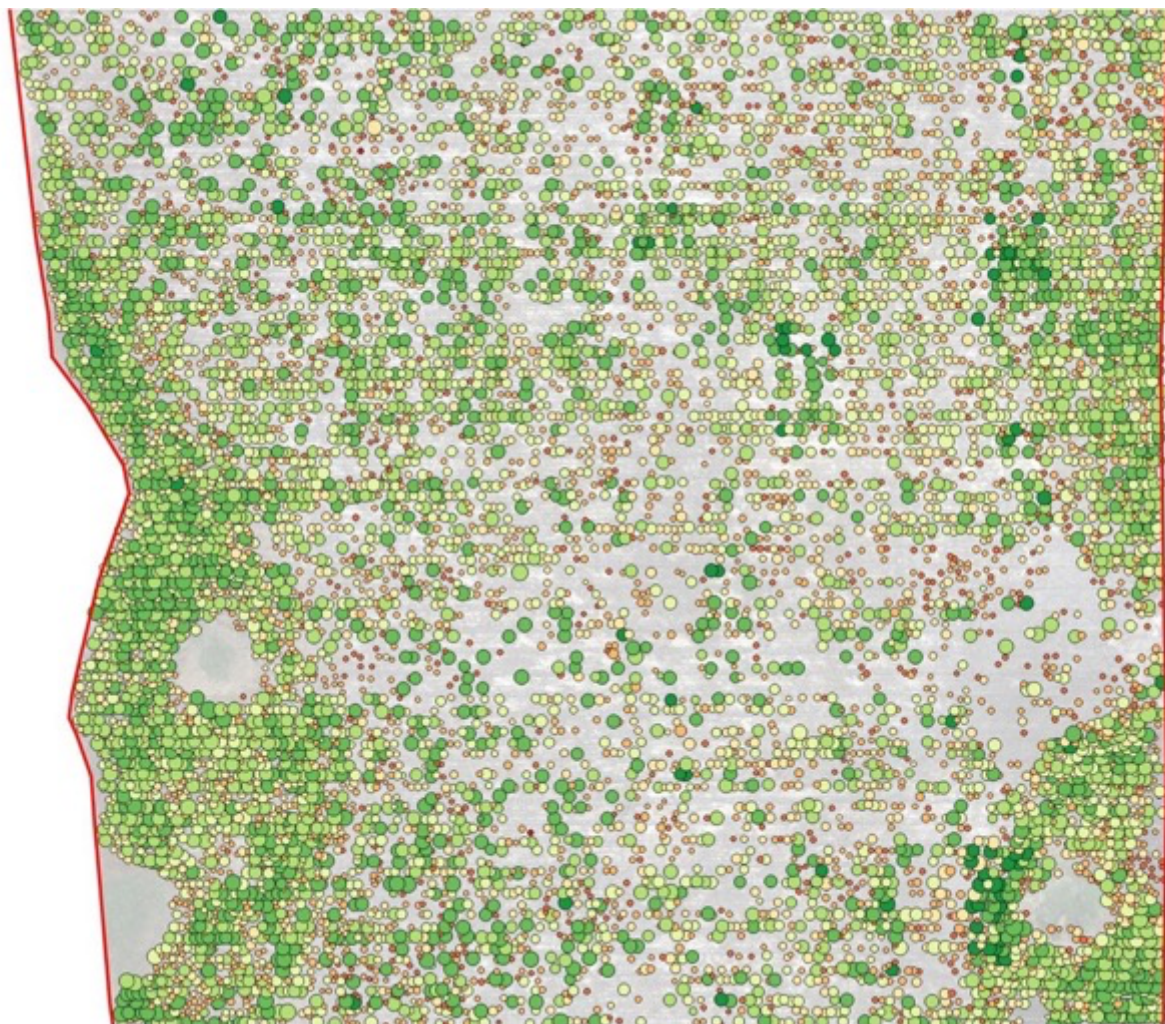
WEED MAP

The weed map identifies all vegetation that is not classified as seedlings and provides an overview map of the presence and severity of weed pressure.



VIGOUR MAP

The vigour map compares the crown size of the seedlings and represents the relative vitality of seedlings across the stand.



Questions? Need help?

Contact Albrecht von Ruffer
ruffer@skylabglobal.com
+49 177 65 15 964



SKYLAB GmbH, Germany
www.skylabglobal.com
+49 40 788 77 092