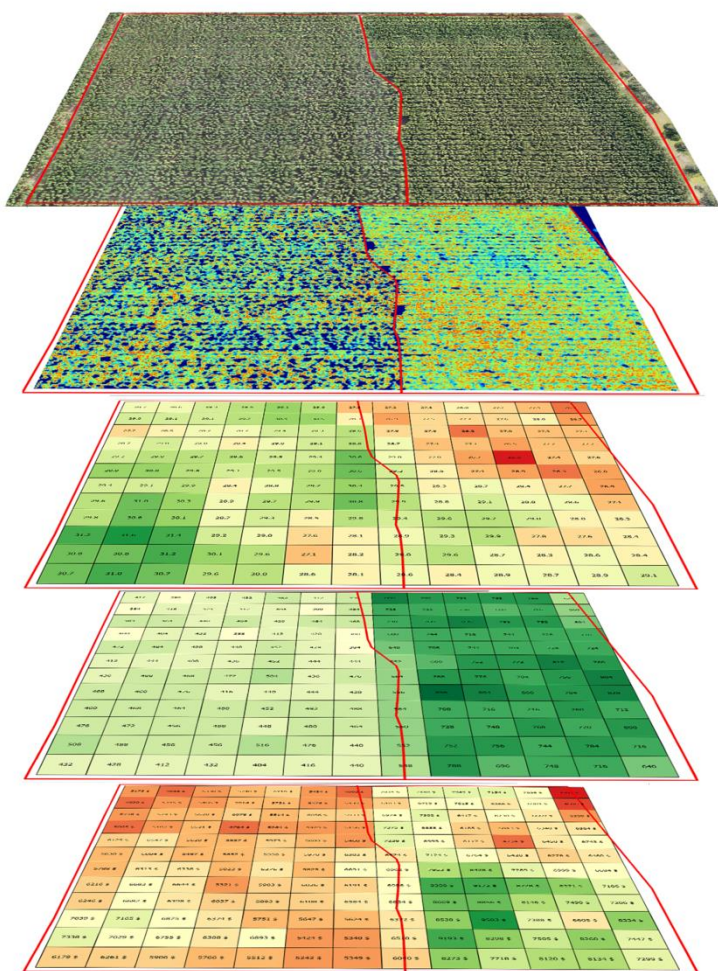


PRECISION FORESTRY MAPS

This first page is meant to show you the high precision maps and results that can be obtained with SKYLAB precision forestry tools.

All forest parameters can be obtained with 85% less sampling effort and displayed in 1/4ha grid cells to enable more targeted forest management, for better thinning and harvest planning, optimisation of rotations and yields and maximisation of profitability.



High resolution **Orthophoto** gives good overview of your stand.

The **Tree Height Model (THM)** shows detailed height distribution across the stand and makes variations easily visible.

The **Diameter (DBH)** distribution is derived from strong DBH-height correlations with optimised sampling reduced by 50-80%.

Tree Density maps help to plan thinning and harvesting operations and predict yields.

Timber Volume can thus be predicted and management, thinning or harvesting planned precisely for 0.25ha grid cells.



Questions? Need help?

Contact Albrecht von Ruffer
ruffer@skylabglobal.com
 +49 177 65 15 964



SKYLAB GmbH, Germany
www.skylabglobal.com
 +49 40 788 77 092

Report Summary

Site	ABC_302_AUS
Analysis	Digital Forester Volume
Species	Pinus radiata
Age	25 years
Area	43,21 ha
Density	783 trees/ha
Height	mean 28.4 m / top 31.2m
DBH	mean 30.78 cm
Basal Area	682 m ² /ha
Volume	0.47 m ³ /tree 327 m ³ /ha 14,129.67 m ³ total

Quality Report

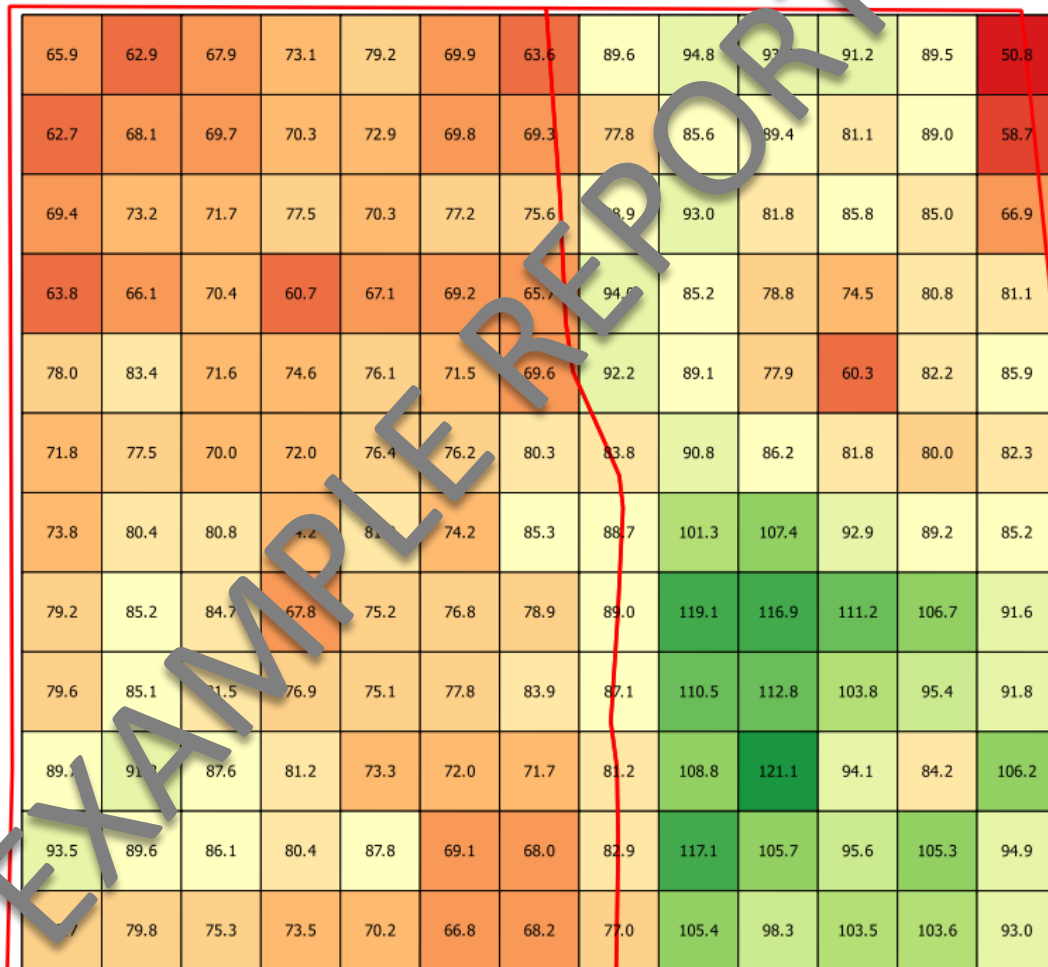
Image quality, stitching	good
Images matched	751
Imagery overlap (0-9)	9
Alignment accuracy	high
Ground resolution (GSD)	2.4cm/pix
Flight Height	120m
Drone/Sensor	Mavic 2 Pro
Overall Quality rating:	95%

Volume
m³ per ¼ha
grid cell

Legend

Sum Volume / grid [m³]

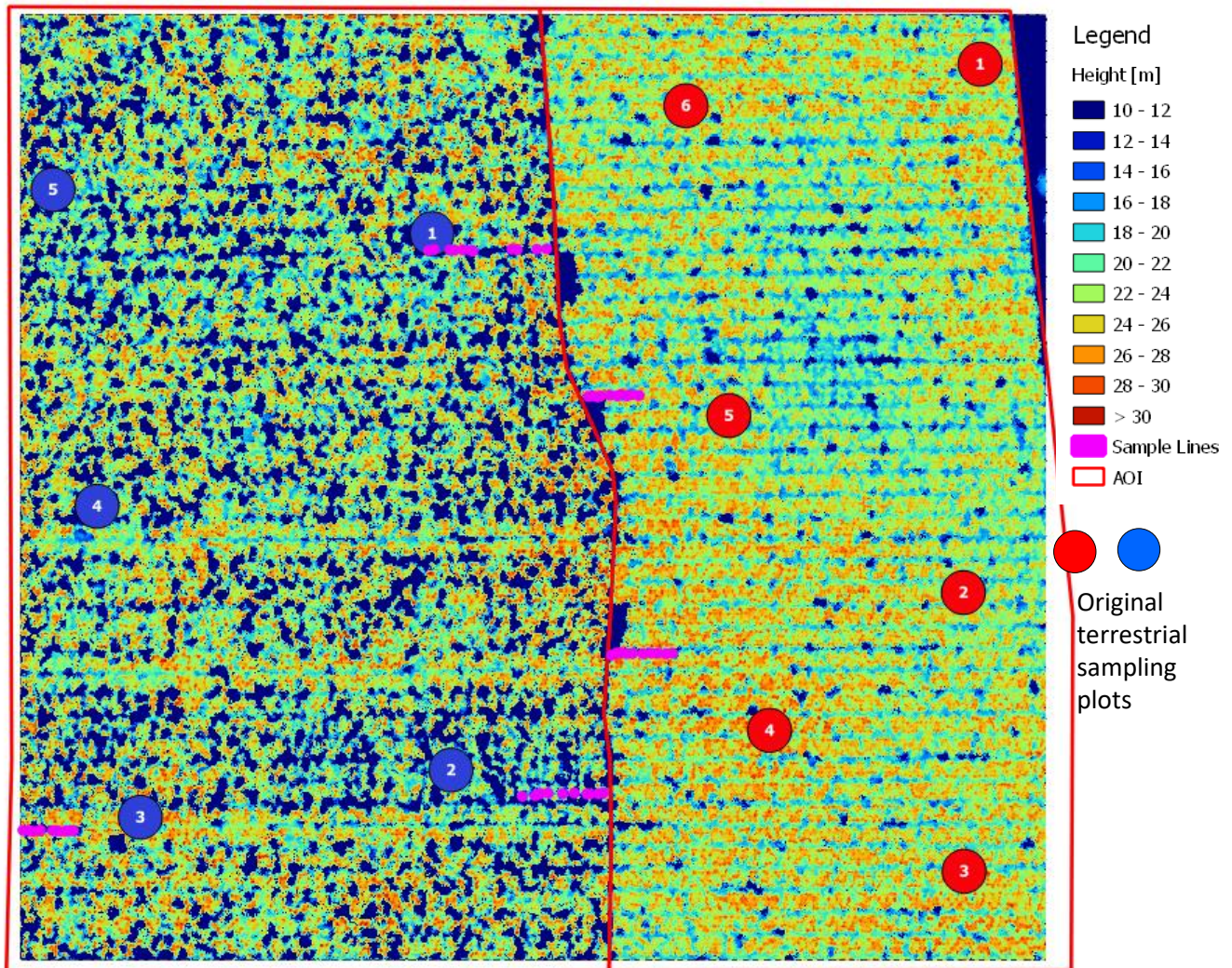
50.8 - 55.0
55.0 - 60.0
60.0 - 65.0
65.0 - 70.0
70.0 - 75.0
75.0 - 80.0
80.0 - 85.0
85.0 - 90.0
90.0 - 95.0
95.0 - 100.0
100.0 - 105.0
105.0 - 110.0
110.0 - 115.0
115.0 - 120.0
120.0 - 121.1
AOI



ORTHOPHOTO

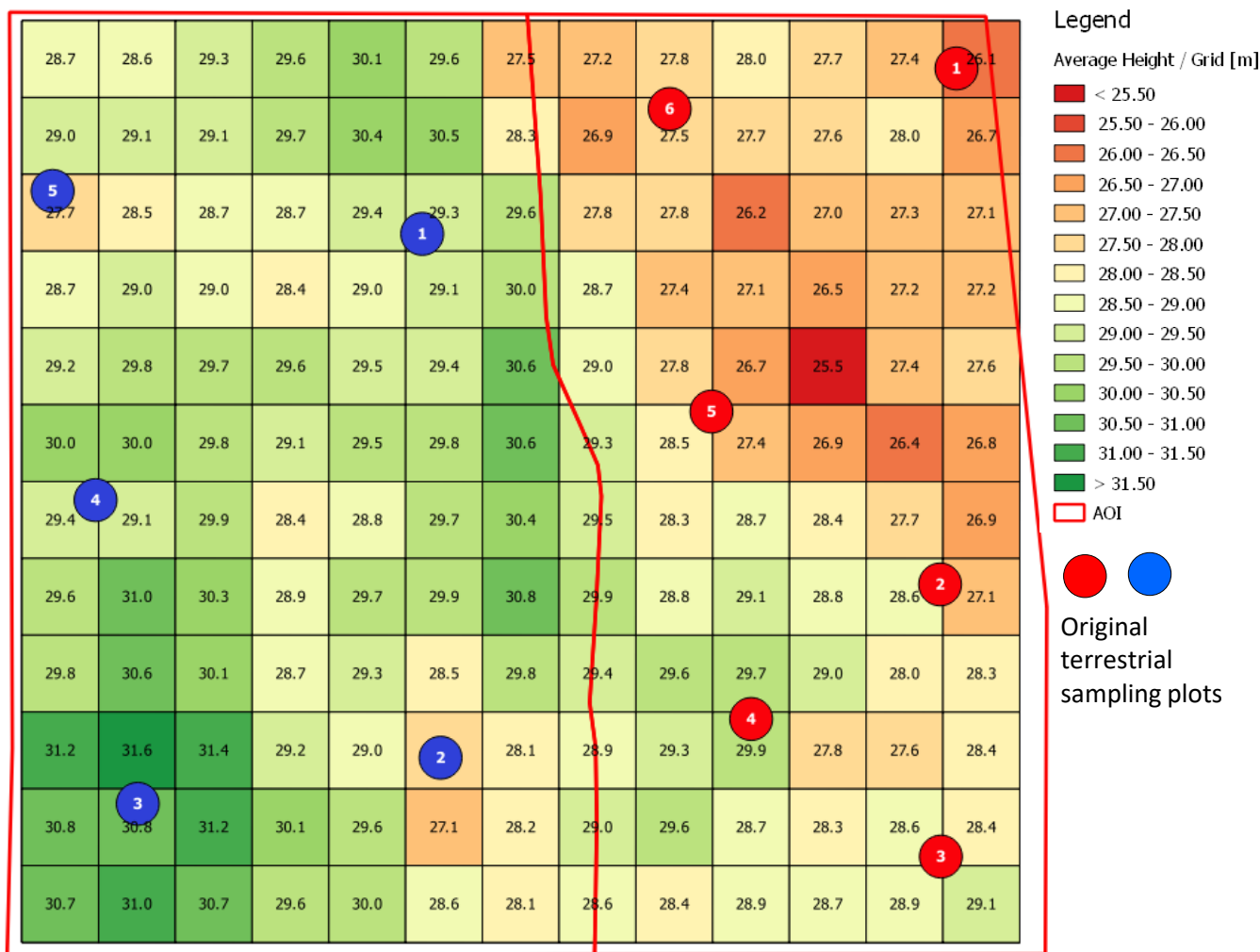
TREE HEIGHT MODEL (THM)

Showing absolute heights across the whole stand, revealing variations and gaps. Used to reduce and optimise sampling in more representative plots.



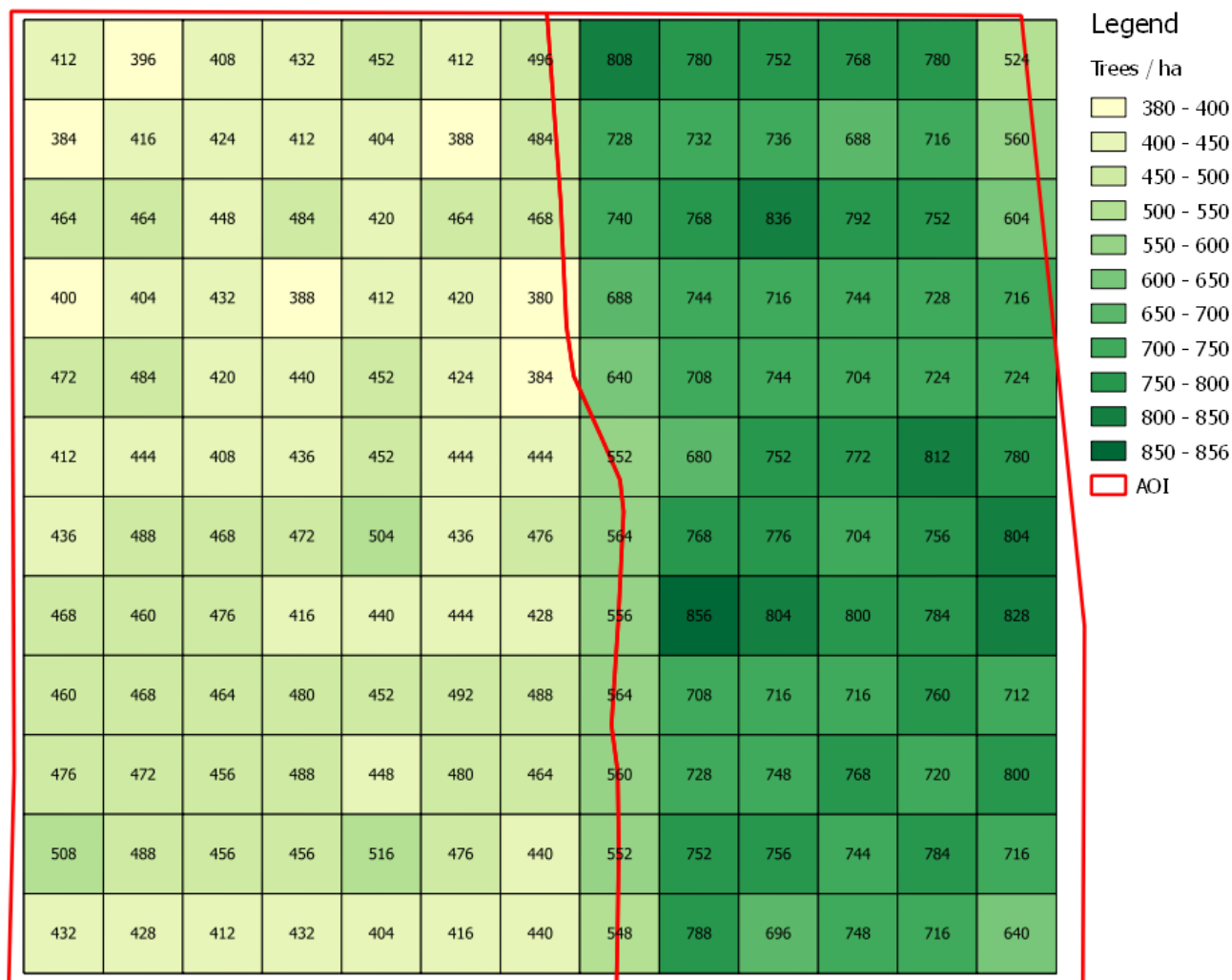
MEAN HEIGHT

Shows the mean height of trees in each ¼ha grid cell across the stand.



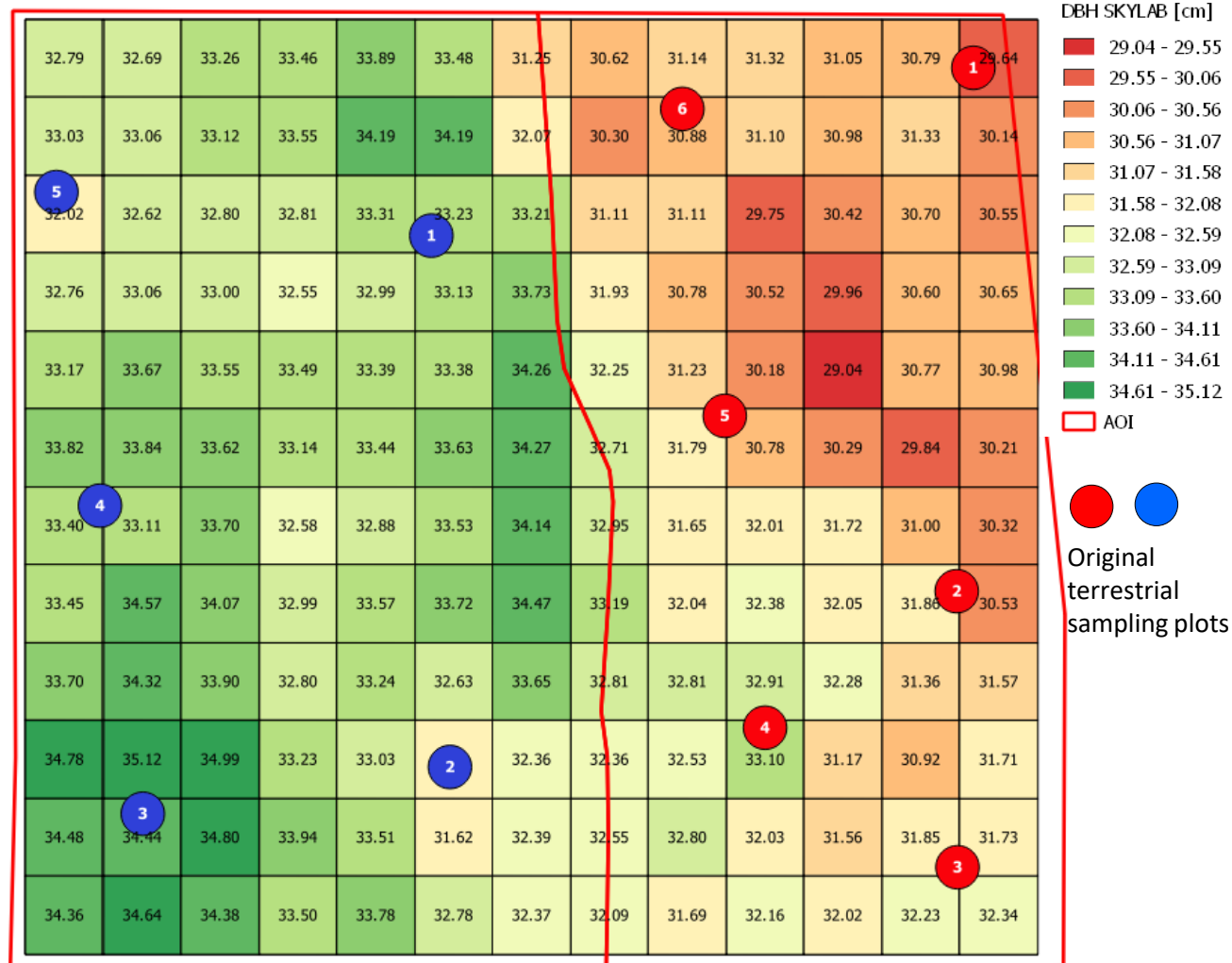
DENSITY

Shows the density of trees/ha in each ¼ha grid cell across the stand.



DIAMETER (DBH)

Shows the mean diameter (cm) per tree in
1/4ha grid cell across the stand.



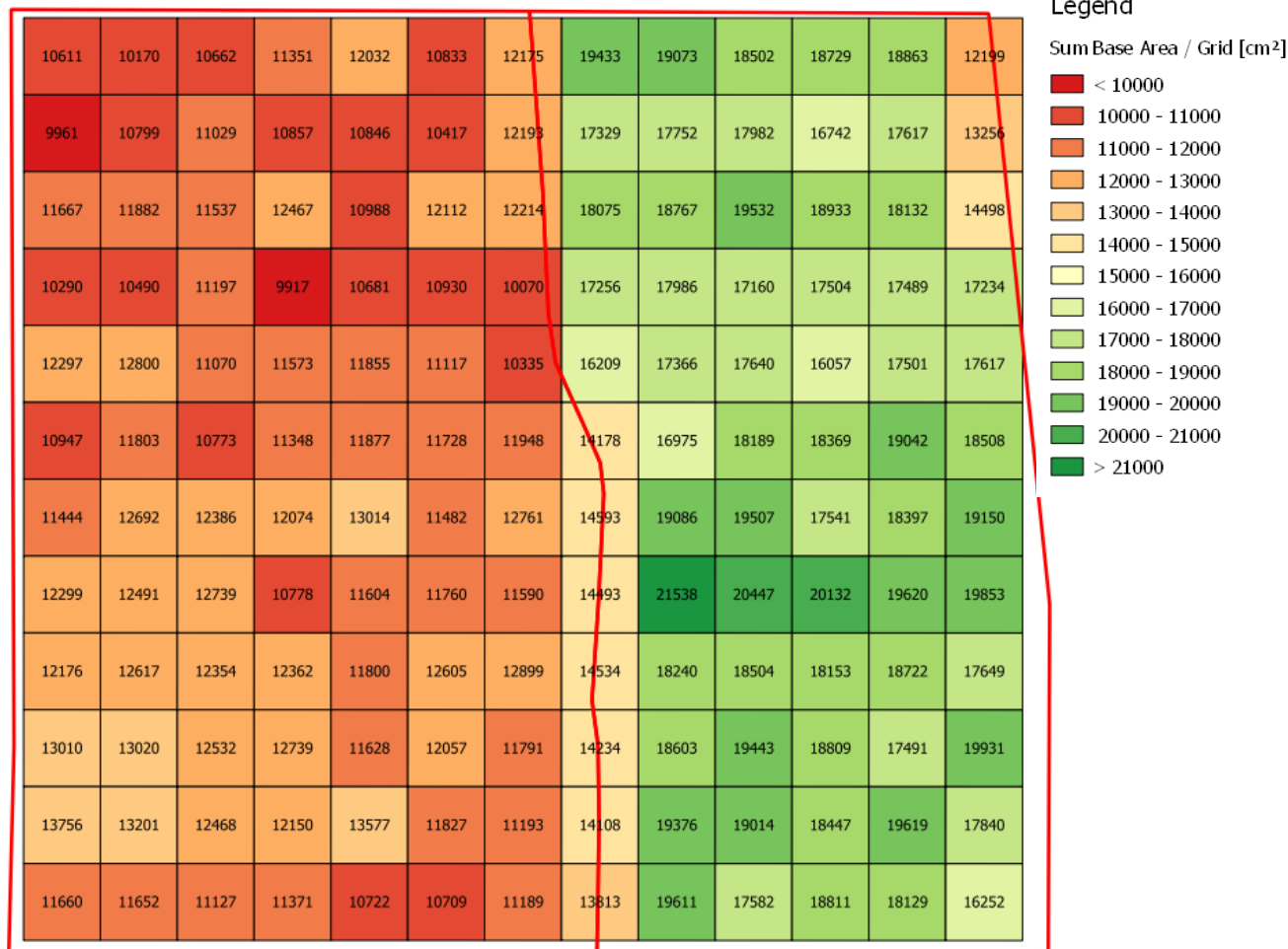
MEAN BASAL AREA

Shows the mean basal area (cm²) per tree in ¼ha grid cell across the stand.



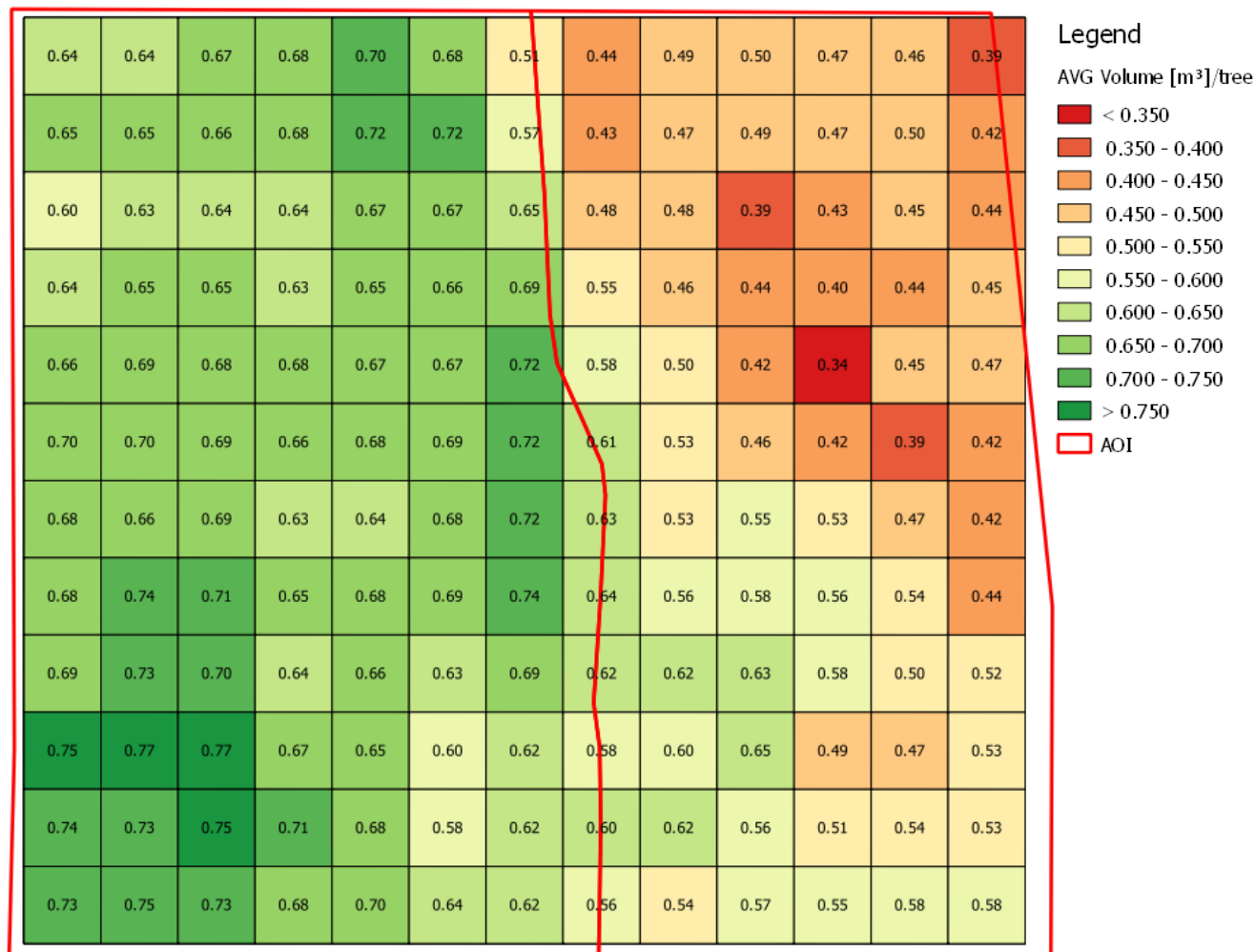
TOTAL BASAL AREA

Shows the sum of the basal area (cm^2) in $\frac{1}{4}$ ha grid cell across the stand.



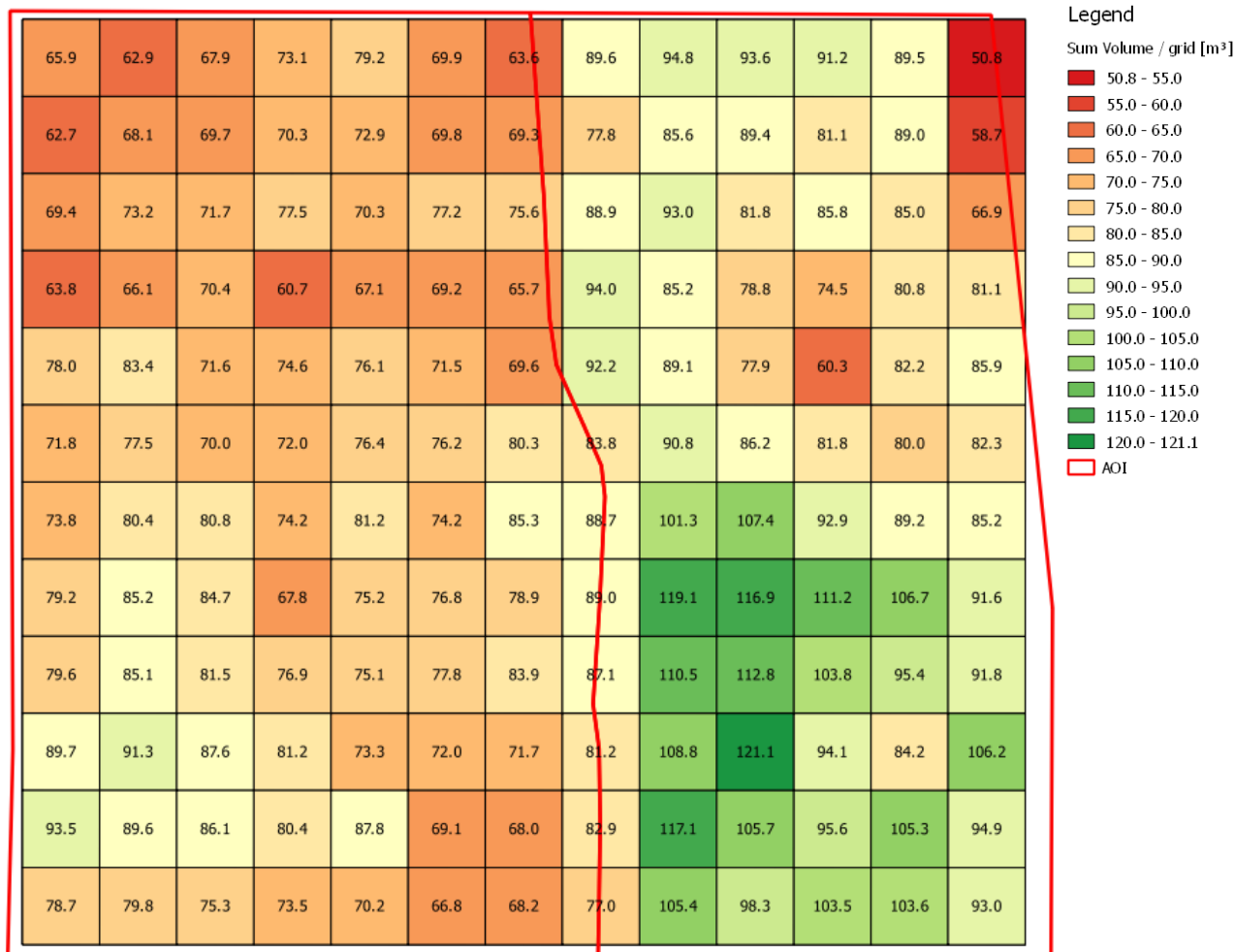
MEAN VOLUME

Shows the mean volume (m^3) per tree in $\frac{1}{4}$ ha grid cell across the stand.



TOTAL VOLUME

Shows the total volume (m³) per ¼ ha grid cell across the stand.



Questions? Need help?

Contact Albrecht von Ruffer
ruffer@skylabglobal.com
+49 177 65 15 964



SKYLAB GmbH, Germany
www.skylabglobal.com
+49 40 788 77 092